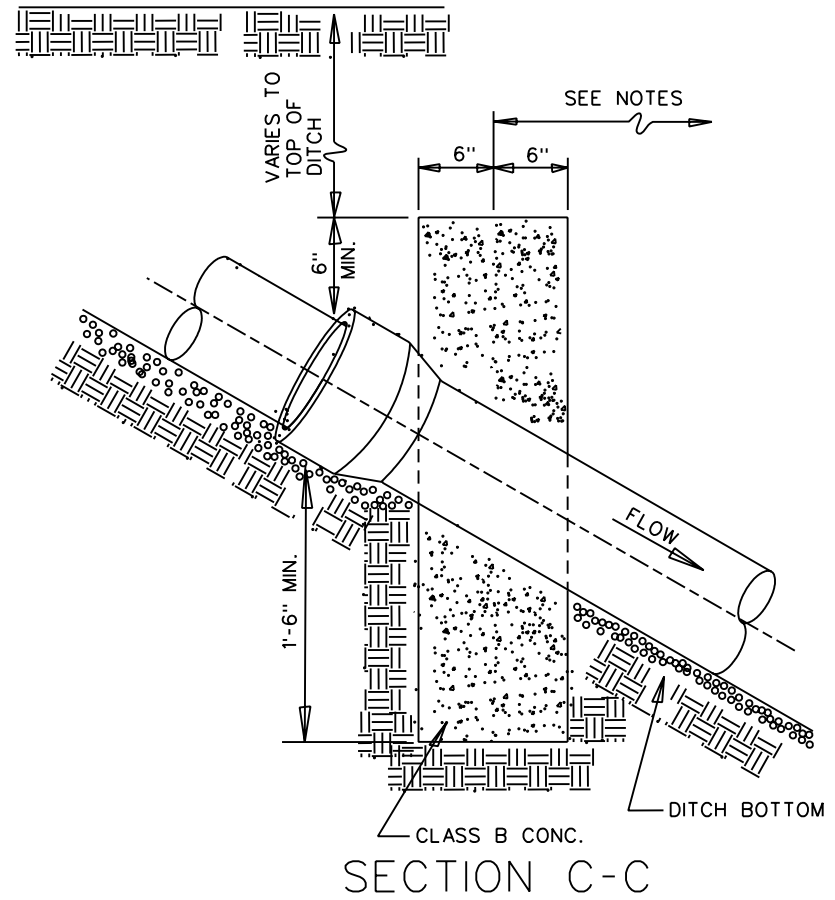
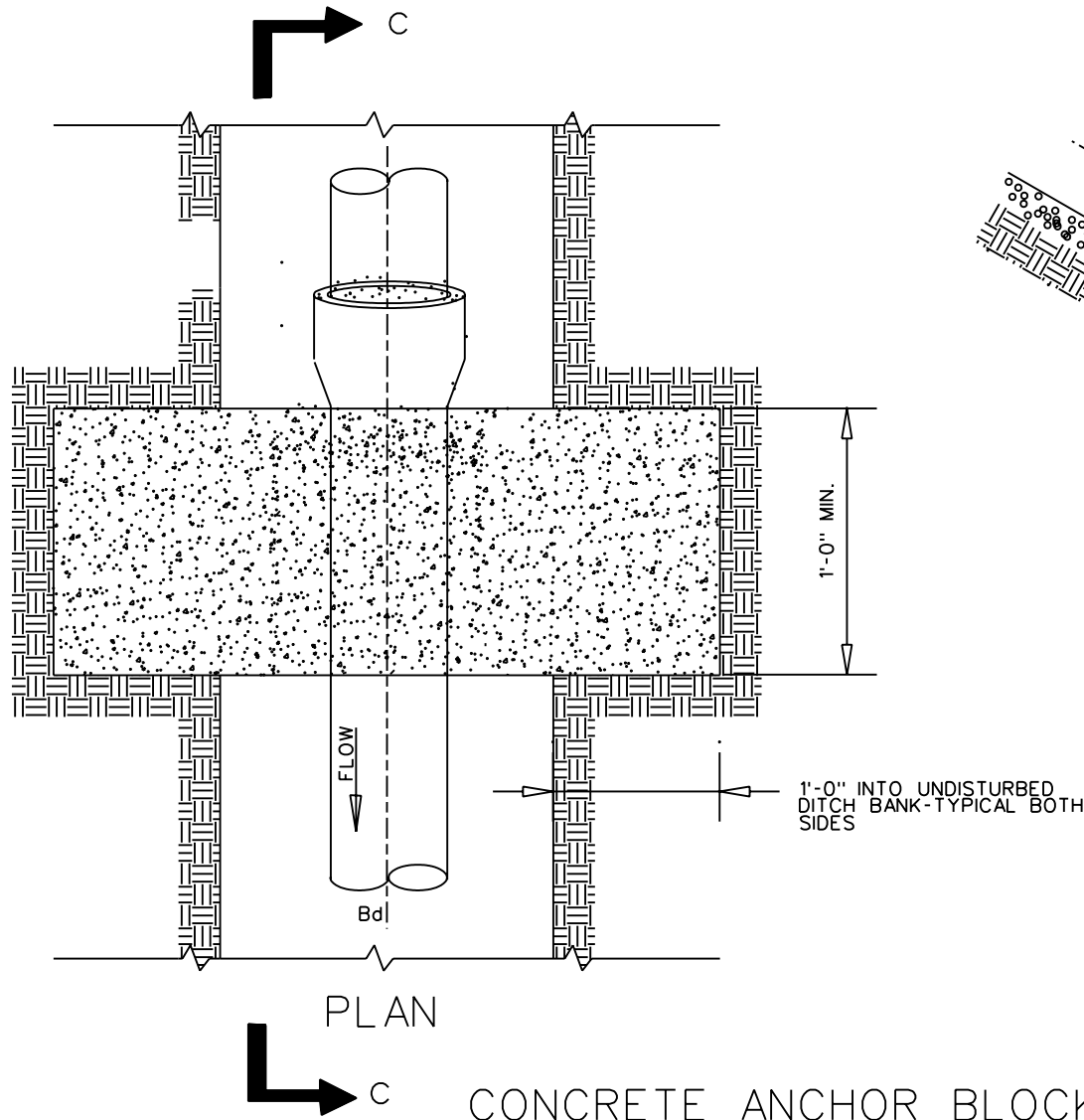


200-130



CONCRETE ANCHOR BLOCK DETAIL FOR PIPES ON STEEP SLOPES  
N.T.S.

- SEWERS ON 18% SLOPE OR GREATER SHALL BE ANCHORED SECURELY WITH CONC. ANCHORS OR EQUAL, AS FOLLOWS:
- A. NOT OVER 36' CENTER TO CENTER ON GRADES 18% & UP TO 25%.
  - B. NOT OVER 24' CENTER TO CENTER ON GRADES 25% & UP TO 35%.
  - C. NOT OVER 16' CENTER TO CENTER ON GRADES 35% & OVER.

200-130